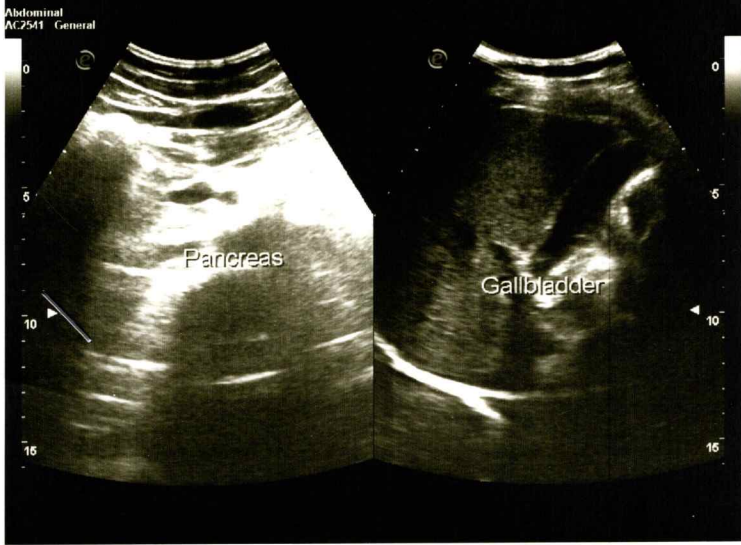


B Res L G 61% P 100% MI 1.1
TEI D 153 mm XIM C11- T1.5 0.1
PRC 800/316 PRS 6



B Res L G 61% P 100% MI 1.1
TEI D 153 mm XIM C11- T1.5 0.1
PRC 800/316 PRS 6



B Res L G 61% P 100% MI 1.1
TEI D 153 mm XIM C11- T1.5 0.1
PRC 800/316 PRS 6

